

# SECURITY MUTUAL LIFE

PUTTING OUR MARK ON HISTORY SINCE 1886





*Security Mutual expresses its appreciation to photographers Richard Anderson, Ed Aswad, the late Lester Cole, James Danvers, and Kirk and Lesli VanZandbergen, as well as to the many unknown photographers whose photos appear in this book. We also thank SML's many in-house photographers, as well as the many SML employees who assisted with photo identification.*

*Security Mutual also expresses its appreciation to Mike and Anita Doll, whose research and writing for the company's centennial publication proved invaluable in putting together this 125<sup>th</sup> edition.*

*Finally, a special note of thanks goes to Security Mutual's Communications Department for their work and research in creating this pictorial history commemorating Security Mutual Life's 125<sup>th</sup> anniversary.*





**SECURITY MUTUAL**



*Dear Security Mutual Employees:*

*November 6, 2011, marked a milestone in Security Mutual's history: the achievement of the company's 125<sup>th</sup> anniversary.*

*In an age where the average lifespan of a corporation is a mere 40 years, the very fact that we are not just surviving, but thriving at the age of 125 is an incredible accomplishment. This accomplishment resulted from the hard work and dedication of all our Home Office employees and Field Associates—past and present. Together we carry on the legacy of our company's founders and the many employees and Field Associates who served before us.*

*We are all privileged to be standing at this point in our company's history, knowing that Security Mutual has been protecting people from life's uncertainties for 125 years, and knowing that our efforts today will enable Security Mutual to continue providing our policyholders with valuable life insurance protection long into the future.*

*I appreciate your continued commitment to Security Mutual and your dedication to helping people plan a more secure future. That commitment and dedication will be vital to Security Mutual's continued growth as our day-to-day achievements compose the next chapter of our company's living history.*

*Now in honor of Security Mutual's 125<sup>th</sup> Anniversary, I am pleased to share with you this book of selected images from the Company's rich and vibrant history.*

*With gratitude and deep appreciation for your part in continuing Security Mutual's story,*



*Bruce W. Boyea  
Chairman, President and Chief Executive Officer*

Bruce W. Boyea joined Security Mutual in 1995 as Vice President of Agency. In 1997 he was named President and Chief Executive Officer, and in 1999 he was also elected to the position of Chairman of the Board. Mr. Boyea also serves as Chairman of Security Administrators, Inc., Security Mutual's wholly owned subsidiary.



*Delivering on Our Promises Since 1886*













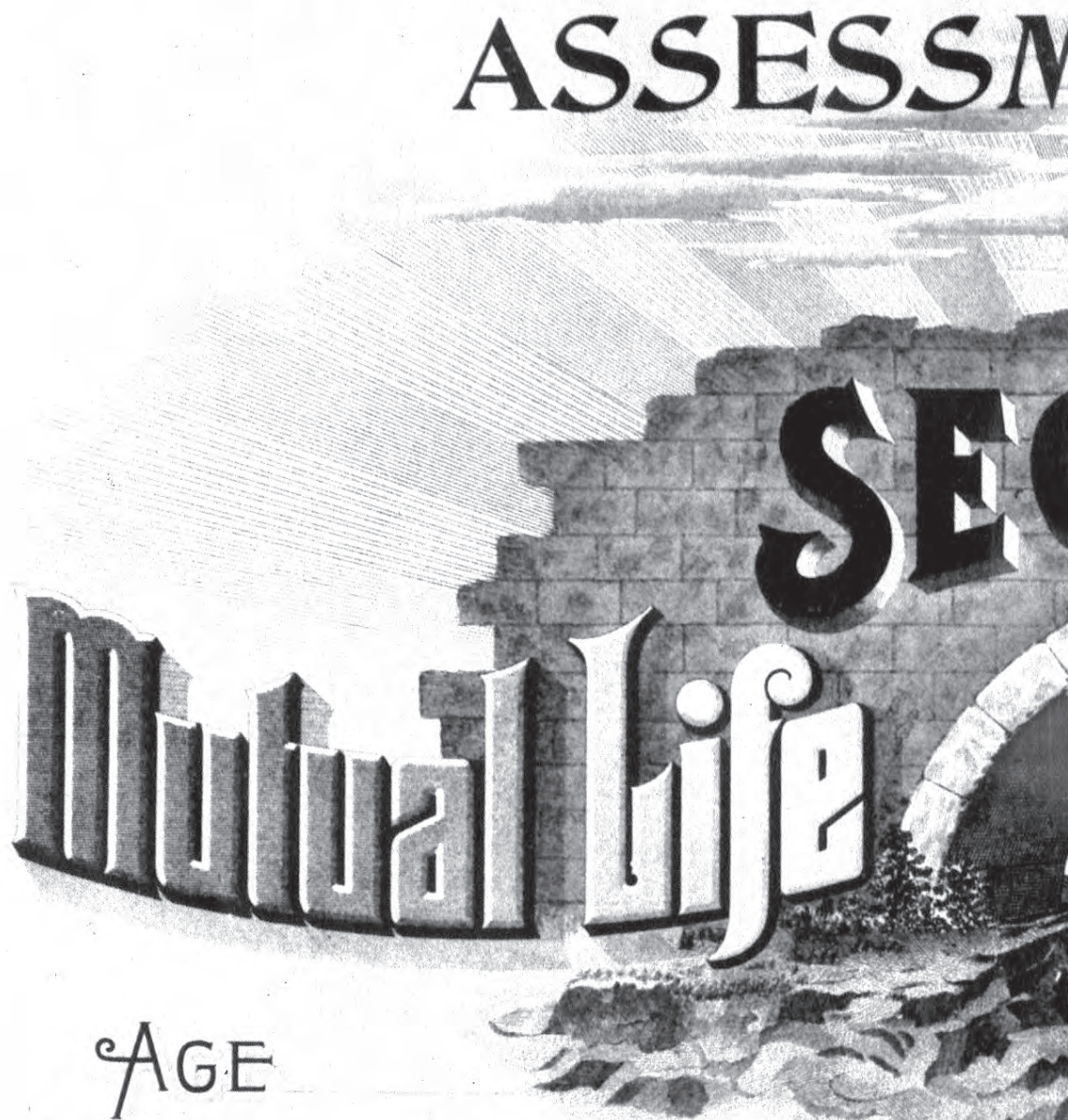
**Court Street, Late 1800s.** Smith and Peabody/Bump—a company providing frames, engravings, mirrors and cornices—can be seen at the site where Security Mutual's Home Office would be constructed in 1904.





**Charles M. Turner**  
Security Mutual's Founder  
and 5<sup>th</sup> President (above).  
Together with a group of other  
Binghamton business leaders,  
Charles M. Turner founded the  
Security Mutual Life Association  
in November 1886.

**Original Security Mutual Logo**  
(right). Turner decided the new  
company needed a logo that would  
convey a sense of security and  
power, and he selected an image  
of an arched stone bridge over a  
rushing river. Security Mutual's  
present-day logo is a stylized  
version of the arched bridge  
featured in the company's  
original emblem.



A. H. J. DUNSTON BOSTON, MASS.



MENT PLAN.

THE

CURITY



ASSOCIATION

OF BINGHAMTON, N.Y.





DEKERS  
ESTABLISHED  
1850

PHELPS  
BANK  
BUILDING

OFFICE

S. W. HALEY  
ARCHITECTS

SECURITY MUTUAL LIFE INS. CO.

PHELPS

HARRIS & HARRIS  
HARRIS & HARRIS





**Security Mutual Offices.** After just one year in business, the company outgrew its original two-office suite in the MacNamara Building at Court and Collier Streets. In 1888, the company moved to the Phelps Building (*left*) at the northeast corner of Court and Chenango Streets, occupying the building's entire third floor.





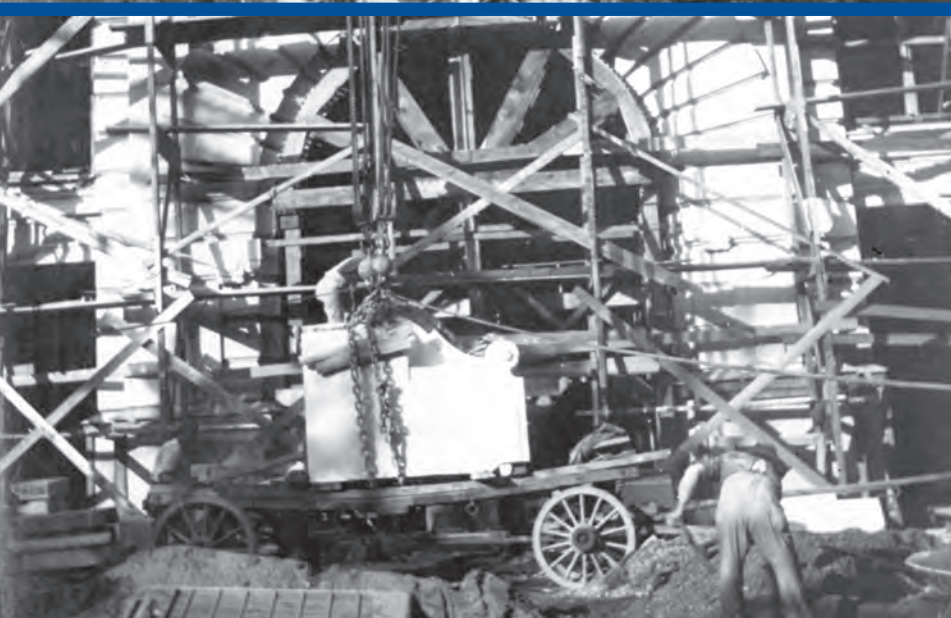
**Name Change** (*above*). In 1898, Security Mutual Life Association changed its name to Security Mutual Life Insurance Company.

**Plans for a Home Office** (*right*). Security Mutual's growth led to plans for construction of a new building to serve as the company's headquarters. In 1902, the company purchased two pieces of property at the intersection of Court and Exchange Streets, just across the street from its offices in the Phelps Building. In 1904 the project began with the demolition of the buildings then occupying the site.











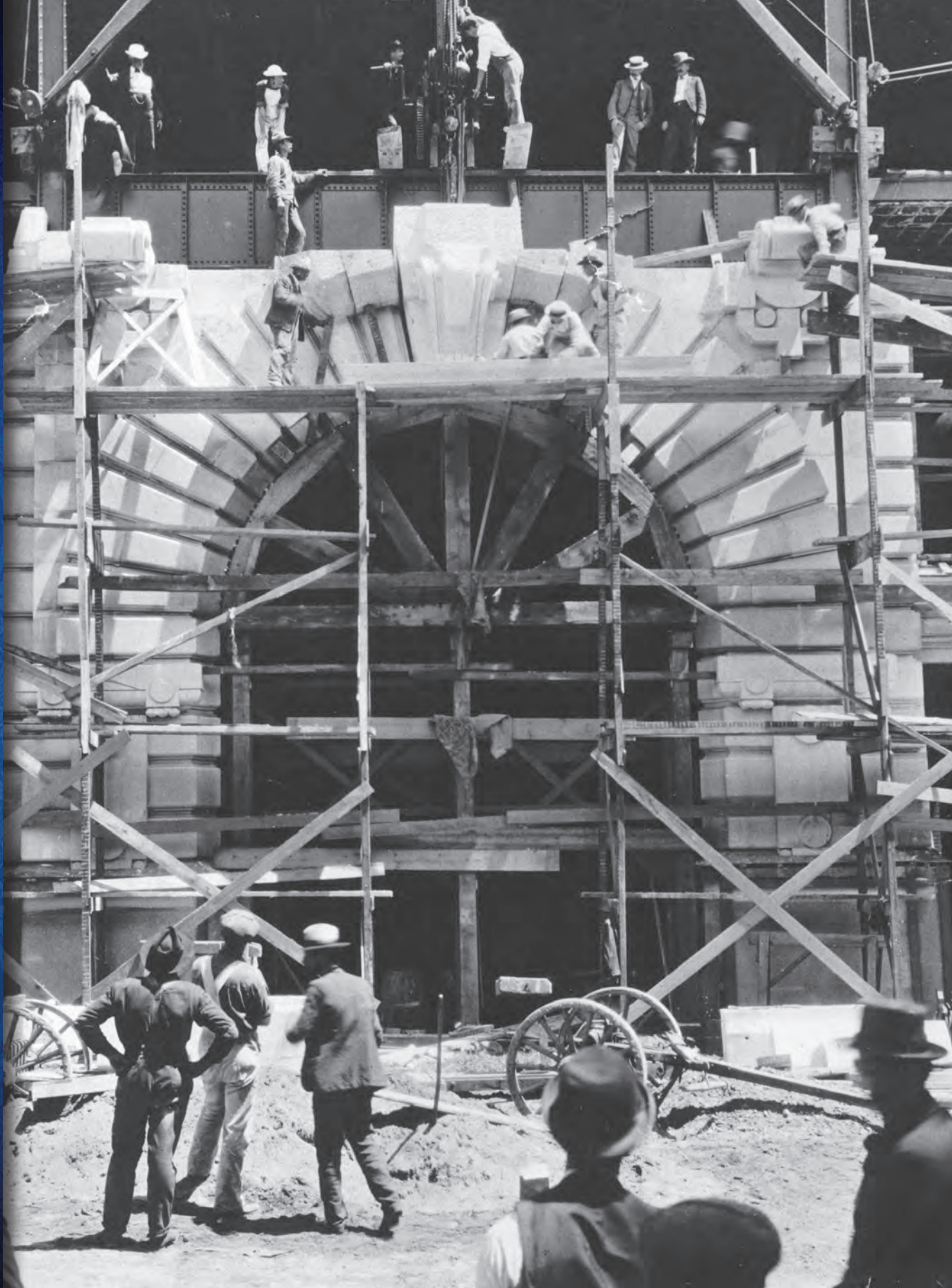


**Updated Logo** *(above)*.  
Security Mutual's 1898 logo gets  
a facelift.

**Construction Begins, 1904** *(left)*.  
Security Mutual breaks ground  
and begins construction of its  
new Home Office.



**The Arch Arises.** It took dozens of workers to lay the keystone in the arch that bridges the main entrance to the Home Office. Charles Turner had the entrance designed after the stone bridge depicted in the company's original logo. Far right is Security Mutual's distinctive entranceway as it was in 1908, at which time it included decorative wrought iron work.





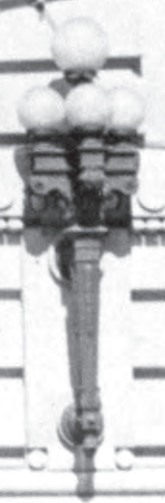
F. STEWART



SECURITY MUTUAL LIFE



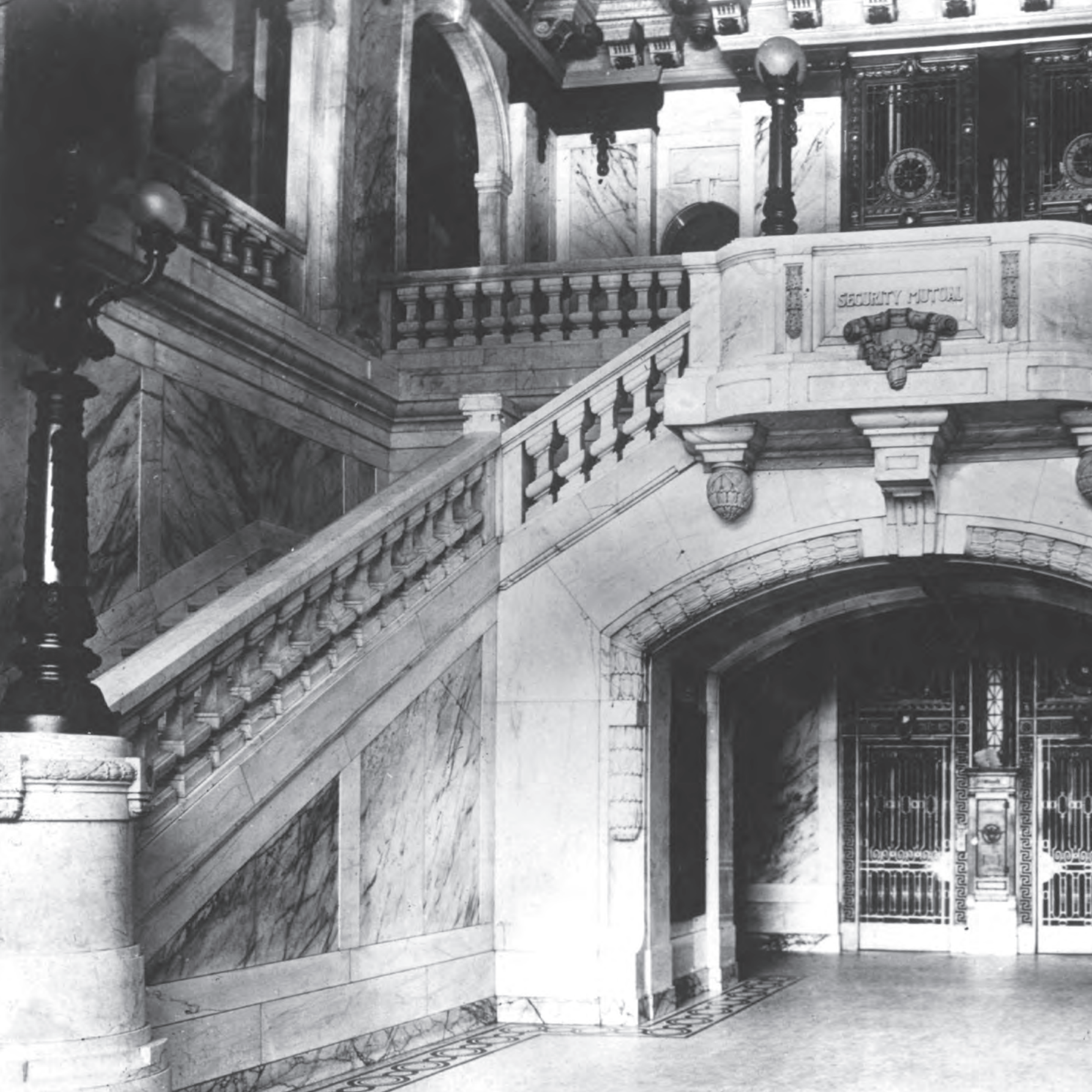
REMINGTON  
TYPEWRITER  
CO.



ETY  
OSIT  
LTS

PA





SECURITY MUTUAL





**Doorknob Detail** (*above*). The doorknobs leading to the executive offices were specially cast, with the company logo reproduced in exquisite detail in gleaming brass. Today, these original doorknobs continue to grace the doors of Security Mutual's executive offices.

**Security Mutual's Lobby, 1928** (*left*). The two-story lobby is 38 feet tall and finished in Pavonezza and Carrara marble.





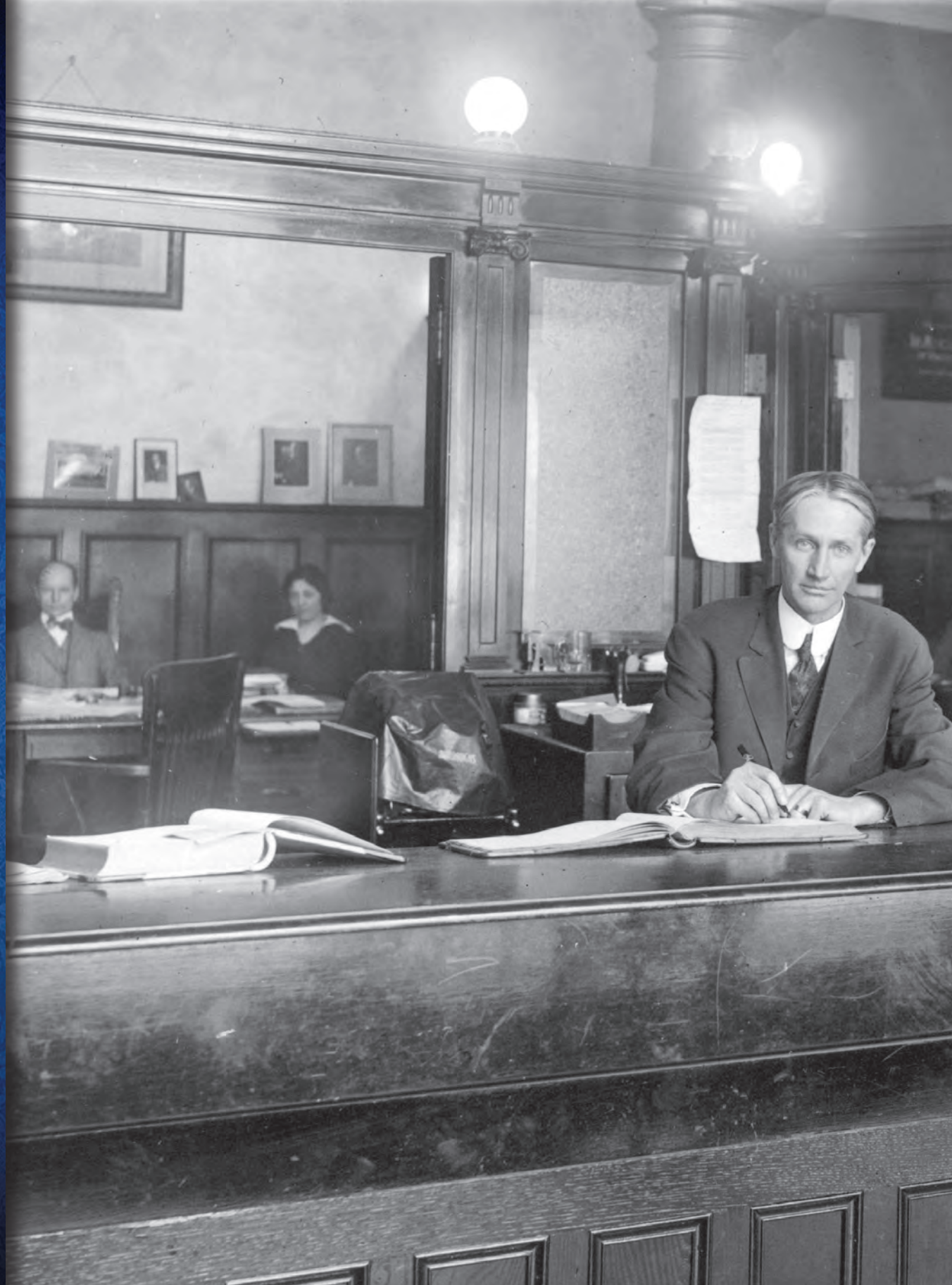
**Decorated for Masonic Convention, early 1900s** (*above*).

**An Office at Security Mutual, early 1900s** (*right*).

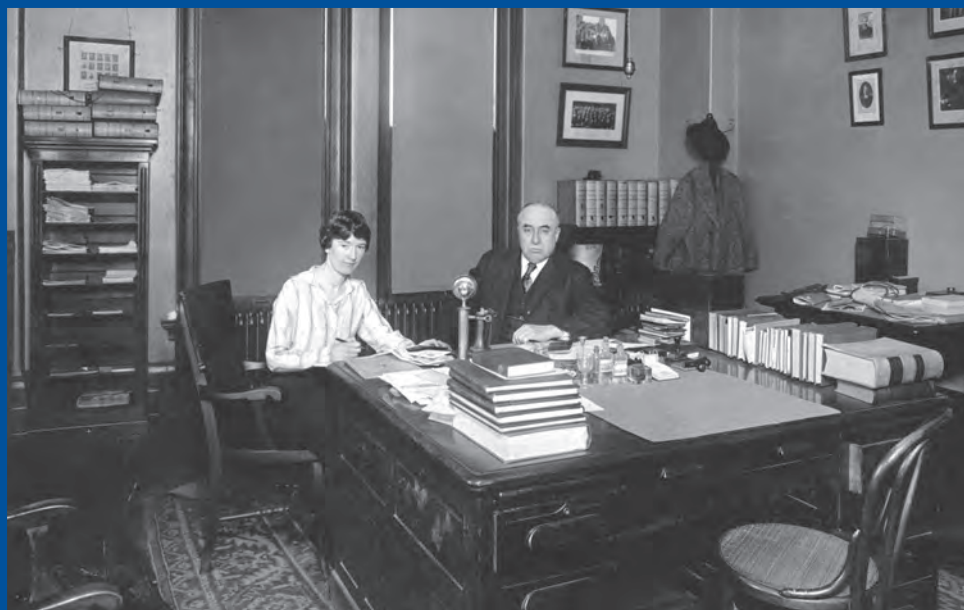
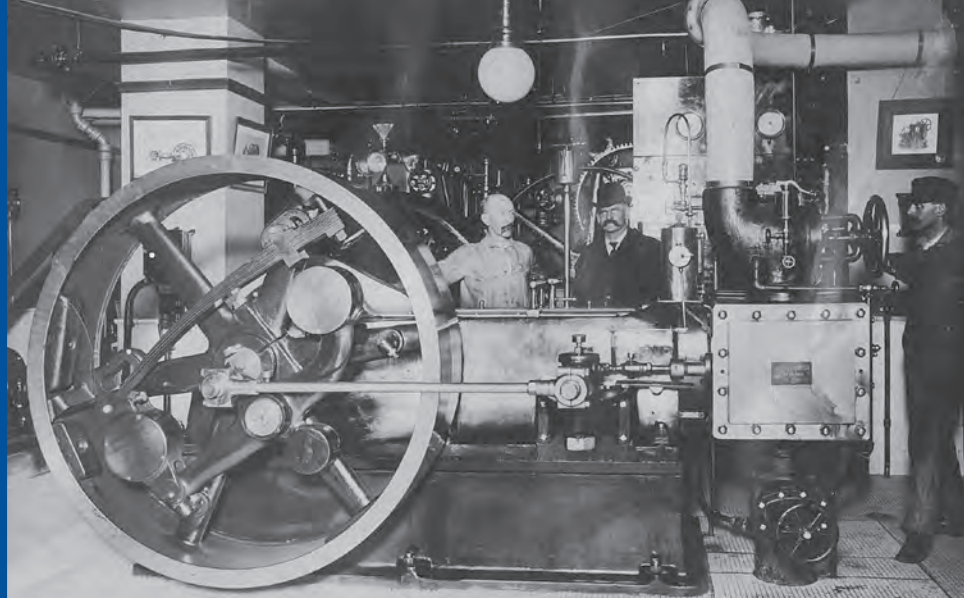
**Original Elevator Motor** (*far right, top*) The building's elevators—described as having “the latest and most improved patents, with high speed . . .”—were touted as the latest in comfort and convenience.

**Mail Room, c. 1905** (*far right, center*).

**c. 1918** (*far right, bottom*).  
Tess Harris and Dr. Robert L. Loundsberry.















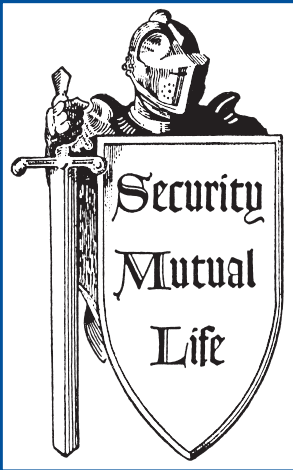
**Early Life Insurance Policies** (above). The policy at top references Security Mutual's "Total Abstinence League," which offered policyholders a reduced premium in exchange for a pledge not "to use, manufacture or sell intoxicating liquor of any form."

**The 9<sup>th</sup> Floor** (far left, top) was originally occupied by the Policy and Premium Collection Departments, where employees worked while standing at chest-high desks.

**The Community Coffee Shop** (far left, center and bottom) occupied Security Mutual's 1<sup>st</sup> floor from the 1930s until 1958. The restaurant offered breakfast, lunch and dinner, and provided a place for employees to socialize outside of work.

**View from the 10<sup>th</sup> Floor** (left). The ceiling of the 9<sup>th</sup> floor originally contained a large, oval-shaped opening that created a balcony on the 10<sup>th</sup> floor, from which workers could see their colleagues working below. The opening was later enclosed, and the balcony no longer exists today.





**SML Logo** (above). The knight logo above replaced the earlier logo of an arched stone bridge over a rushing river. This logo was used until 1952.

**10<sup>th</sup> Floor Offices, c. 1918** (left). Frances Karker, Leon Mable and Elizabeth Heggernan.

**New Business Division, 1934** (far right, top). The Medical Department and Policy Issue.

**SML's Medical Department Lab, c. 1934** (far right, center). Miss Kitty Case making notes.

**The World War II Years.** (far right, bottom). Thirty-six SML employees joined the military forces during WWII, including Robert E. Richard (center). He returned to Security Mutual following the war and became Superintendent of Agencies. Security Mutual kept in touch with its 36 military employees through "The Security Mutual Rooster," a chatty newsletter.















SECURITY MUTUAL LIFE

**SML's Transcribing Bureau, 1934** (*far left, top*). Workers are shown using the latest in modern gadgetry—the large cylindrical Dictaphones.

**Security Mutual's 60<sup>th</sup> Birthday, 1946** (*far left, bottom*). Presiding over the festivities were (*l to r*) Comptroller Albert E. Smith; Vice President Haines B. Wickes; Z. Bennett Phelps; Superintendent of Agencies Leon F. Mabel; and the Company's 8<sup>th</sup> President, Frederick D. Russell.

**Security Mutual's 65<sup>th</sup> Anniversary, 1951** (*left*). Security Mutual shared the good news of its 65<sup>th</sup> birthday by turning on certain lights on various floors to form the number "65" across the face of the building.





**IS HIS FUTURE PROTECTED?**

Don't let the phrase "insurance" program scare you. There is nothing formidable about it. It simply means that you are setting up or have set up an assured economic independence for your loved ones. In the selection of your insurance, it is well to have your coverage in a company like the Security Mutual Life—a company which is "large enough to protect you, yet small enough to know you." Complete insurance service—life, sick and accident, hospitalization. A phone call to Binghamton 4-3231 will bring full information without obligation to you.

**Security Mutual**  
Life Insurance Company  
Binghamton, N. Y.

**Just Mail Us a Postcard  
Saying "I'm Interested!"**

During these uncertain days there are many things we would like to know about the future. Especially protection for years later on. The Security Mutual Life Insurance Company has many definite plans, one to suit YOUR particular ideas. One for you that will not be a burden to carry. Just a postcard stating, "I am interested in future protection, what have you to offer me?"

**SECURITY MUTUAL  
LIFE INSURANCE CO.**  
BINGHAMTON, N. Y.

**You or Your Family May  
Be Stricken While Traveling**

Let's face facts. You may have to go to a hospital some day "on the spur of the moment." That's the time you will need hospitalization protection; the Security Mutual kind—one of the finest hospitalization protection plans in existence. It is tailored to fit individual needs. Let us explain its full provisions. Dial 4-3231.

**LIFE—HEALTH—ACCIDENT—HOSPITALIZATION**

**Security Mutual**  
Life Insurance Co.  
Binghamton, N. Y.

**Provide Your Children  
With a 24-Hour Mother**

A man's responsibility for his family remains even though he's taken from them. Assure your family of "freedom from want." The Security Mutual Insurance Company has a type of policy suited exactly to your needs. Whether you need life insurance, hospitalization or health and accident insurance, Security's safe protection is best from every standpoint. Phone 4-3231 for complete information with no obligation on your part to buy.

**Security Mutual Life**  
Insurance Co. of Binghamton

New Logo (above). The logo above was used from 1952 until the 1970s.

Selections from 1943 Ad Campaign (right, top).

Selections from 1952 Award-Winning Advertising Campaign (right, bottom). SML's 8th President Frederick Russell stated that promoting life insurance requires "mixing warm human emotions with cool common sense . . ." This campaign featured photographs by Esther Bubley, a leading photojournalist during the 1940s through 1960s. Bubley supplied photographs for many organizations and periodicals, including *Life*, *Ladies' Home Journal*, Pepsi-Cola International, Pan American World Airways and UNICEF.

Agency Administration, 8<sup>th</sup> Floor, c. 1960 (far right, top) Ms. Kittredge, Jane Davis and Lynne Wyckoff.

Health Premium Collection Unit, c. 1960 (far right, bottom). Front row, front to back: Ruth Shager, Dorothy Jennings, Kathy Ferro. Second row, front to back: Betty Robble, Sue Haines, Bonnie Morgan.



**RECOGNITION**

*Now he's become a person . . . an individual in his own right. Now he has a name.*

*He belongs . . . to a certain family, a certain house. Even now, his personal possessions have begun to accumulate. His store of worldly goods may start with a teddy bear and a rattle . . . but a beginning has been made. Soon, he'll have a dog. . . and from then on it's up to him, and you.*

*At perhaps no other time in your life is your future planning so important. At perhaps no other time can our experience in planning be so helpful to you.*

Security Mutual Life Insurance Company  
Binghamton, New York



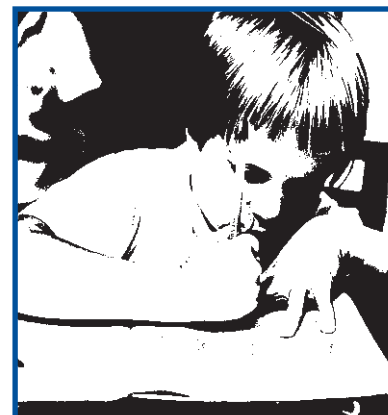
**FULFILLMENT**

*You've built your home around your heart. The years behind were good . . . those ahead should be richer still.*

*Here is a world almost entirely of your own making . . . a proud and precious possession, a place and a state-of-mind combined.*

*For the freedom from anxiety and the future security you want, and she deserves, why not let our experience guide you . . . as it has so many others.*

Security Mutual Life Insurance Company  
Binghamton, New York



**ASPIRATION**

*The young mind gropes, reaches upward . . . sometimes with clumsy effort, often in error. So many facts to be accepted, so many rules without a reason . . . so many things that are simply so, but no one seems to know why. Pencils have a will of their own, letters look strangely alike, and her own name means nothing to her the first time it's written. But the priceless curiosity is there, asking why to everything. Be certain she has a chance to learn the answers . . . for as long as she wants to know. We can help you plan for your child's future education, as we have planned for our own children . . . and those of so many others.*

Security Mutual Life Insurance Company  
Binghamton, New York













**SM Logo (above).** This logo was used from the 1970s until the early 1980s.

**SML's Print Shop, c. 1960 (far left, top).** The Company's print shop was located in the basement and was in operation until 1994. The print shop produced Security Mutual's policies, applications, form letters and company forms and stationery. Pictured here are (l to r) Michael Stasukevich and Joseph Fell.

**Transcribing Bureau, 1961 (far left, center).** By this time, electric typewriters had replaced the old manual typewriters, and modern desktop Dictaphones had replaced the large cylindrical version used 30 years earlier. Pictured here are (l to r) 1<sup>st</sup> row: Dorothy Retman, who served Security Mutual for 38 years; Donna Tingley; Evelyn Hill. 2<sup>nd</sup> row: E. Soeller (standing); Lynola Carey (2<sup>nd</sup> from right).

**Company's First Electronic Data Processing Equipment, 1963 (far left, bottom).** After a 3-year study, the Company introduced new IBM electronic data processing equipment. SML's 9th President—Richard Pille (left)—is shown here inspecting the new units with Gene Travalli, Manager of Data Processing, and Richard H. Parish, Comptroller.

**Security Mutual Lobby, c. 1960s (left).** The Company's previous logo is featured in the recessed archways on each side of the lobby.





1970: \$1 Billion of Life Insurance in Force (*above*).

The Security Mutual Building Before the Addition, late 1970s (*right*).

Security Mutual's Transcribing Department, c. 1986 (*far right, top*). Cindi Eaton, Diane Pello and Colleen Lewis (*l to r*). By this time, Security Mutual's early model electric typewriters had been augmented by the latest office equipment: IBM Selectric typewriters, the IBM Mag Card Selectric typewriter and the IBM Displaywriter (*shown here being used by D. Pello*). The Mag Card and Displaywriter were technological innovations of the time, functioning as desktop text processing systems that could store documents and allowed for revisions without retyping the entire document. The Displaywriter was dubbed "the toaster" because of its large cabinet size and big slots to accommodate its 8-inch floppy disks.

Security Mutual's Mailroom, mid-1980s (*far right, center*). Pictured here (*l to r*) are Nancy Nicklaw, Jill Giblin and Chris Guth.

Security Mutual's Graphics Department, mid-1980s (*far right, bottom*). At this time before the adoption of graphic design software, all design and printing setup was done by hand at drafting boards. Pictured here is John Gal.





SM  
1886  
NEW YORK











**THE SECURITY GROUP  
OF NEW YORK**


**SG Logo** (*above*). In the early 1980s, a new logo was adopted that reflected Security Mutual's expansion into subsidiaries.

**The Security Mutual Life "Weather Channel,"** early 1970s (*far left, top*). In 1969, the Security Mutual Building attracted daily attention when the company installed a neon sign on the rooftop that forecast the weather by having the letters S, M and L change colors: green for clear skies, gold for cloudy, flashing gold for stormy conditions, and white for snow. Security Mutual employees called the weather service twice a day for the forecast and then threw the appropriate switch.

**Breaking Ground Again,** c. 1979 (*far left, bottom*). SML's 11<sup>th</sup> President Kenneth Lord (*l*) and Chairman and 10<sup>th</sup> President Robert M. Best (*r with jackhammer*) break ground for the new addition. Also pictured are Alice Deutsch (*l*) and Jane Young (*r*).

**Construction Preparation,** 1979 (*left*). Security Mutual had unplugged its neon sign in 1973 in the midst of the energy crisis. The sign was permanently removed in 1979 in preparation for the renovation of the old building and construction of a three-story addition to the east side of the building.





**Construction of New Addition,**  
c. 1979-1981 (*far right, top, center*  
*and bottom*).

**The Completed Project, c. 1981**  
(*right*). Security Mutual's new  
addition was dedicated on  
September 12, 1981, and provided  
95,000 square feet of new office space  
and a semi-enclosed parking lot.











# SECURITY MUTUAL



**The Atrium** (above and far left). Security Mutual's new addition was built around a dramatic two-story plant-filled atrium capped by skylights. The Atrium was designed to be seen from the offices in the new addition, and adds a lovely light-filled indoor green space to the company's cafeteria and guest dining room on the 2<sup>nd</sup> floor. In addition to being very popular with employees, the Atrium cafeteria is also a popular lunch spot for workers from other downtown offices.

**Court Street Entranceway of New Addition, early 1980s** (left).





**Financial Targets Meeting, 1988**

*(right)*. Senior Vice President of Agency Fred G. Kirtland *(standing)*; Susan Mistretta, Second Vice President and Associate General Counsel *(seated left)*; and William Atkin, Executive Vice President and Chief Financial Officer, discuss the company's financial results.

**Security Mutual Systems Department, late 1970s.**

Gary Reed *(far right, top)* and Lou Fiacco *(far right, bottom, on right)*. In 1985, Security Mutual installed a networking system giving field agents instant access to the Home Office.













**Security Mutual's Centennial Logo, 1986** (*above*).

**Robert M. Best and Paul H. Pearson, 1985** (*far left, top*). Robert M. Best served as Security Mutual's 10<sup>th</sup> President from 1969-1977, as well as CEO from 1972-1987, and Chairman of the Board from 1977-1990. Paul H. Pearson was elected Security Mutual's 12<sup>th</sup> President in 1981. He was elected CEO in 1987 to replace retiring CEO Best, and was elected Chairman in 1996. Mr. Pearson continued to serve as Chairman, President and CEO until his retirement in 1997.

**Security Mutual's 100<sup>th</sup> Anniversary, 1986** (*far left, center and bottom*). Security Mutual turns 100: \$13.1 billion of life insurance in force; \$582 million in assets; \$11.5 million in dividend payments. The company celebrated its anniversary with various Home Office festivities including a special birthday cake.



**MUTUAL**



**\$1 Billion**  
**in Assets**  
SECURITY MUTUAL LIFE

\$1 Billion in Assets, 1992 (above).

Security Mutual Home Office, 1995 (right, top).

**New SAI Headquarters, 1998.** (right, bottom). In May 1998, Security Mutual's subsidiary—Security Administrators, Inc.—established its headquarters in the newly restored Waldron Building. As a founding member of Court Street Redevelopment, Security Mutual has been committed to rebuilding Court Street. The Waldron Building is just one of several buildings that has been restored and is serving as offices for area businesses.

**Security Mutual Expands Metropolitan New York Presence, 1998** (right, inside). Representatives from both SML's Group and Individual operations have long maintained offices in New York City. SML expanded this presence in 1998 by opening a New York City Regional Office on the 44<sup>th</sup> floor of the Empire State Building. The regional office plays a vital role in providing technical, marketing and educational support to SML's Field Associates. In 2008, the regional office moved to a new, larger location at 55 Broadway in the heart of the City's financial district.

**Security Mutual Mentoring Program, 1994** (far right, top). Picnic at Otsiningo Park with mentees from Binghamton's Calvin Coolidge School.

**SML "Shoot Out" Sales Campaign 1994-1995** (far right, center). "The Shoot Out" was modeled after "The Feud," a sales campaign instituted in 1959 that continued annually for more than 20 years. Both "The Feud" and "The Shoot Out" divided SML's Home Office and Field Associates into two teams, with the Home Office teams cheering on their field counterparts.

**Commitment to Insurance Education, 1997** (far right, bottom). Employees receive certificates of completion for insurance courses offered through the Life Office Management Association (LOMA). (back row, from left) Pat Jones, Donna Pandich, Diane Moors, Rob Decker, (front row, from left) Diane Pello, Carolyn Hoyt, Andrea Olevano and Tracey Wardell.













# \$2 Billion in Assets

SECURITY MUTUAL LIFE

**\$2 Billion in Assets, 2006** (*above*). It took 106 years for Security Mutual to reach its first billion in assets, and only 14 years to reach its second billion.

**National Start! Walking Day, April 7, 2010** (*far left, top*).

Two groups of SML employees participated in this American Heart Association Program, proudly representing SML as they walked throughout downtown Binghamton.

**United Way Campaign, 2010.**

(*far left, center*). Security Mutual employees Donna Pandich (*l*) and Sandy Potter (*r*) sell raffle tickets for gift baskets created by various SML departments. Security Mutual and its employees have been awarded the Thomas J. Watson Gold Award for 16 consecutive years, and are past recipients of the Chairman's Award and Challenge Cup Awards.

**Children's Christmas Party, 2010** (*far left, bottom*).

Each year, SML Chairman, President and CEO Bruce Boyea treats the children of SML's employees to a reading of Clement Moore's classic Christmas story, "Twas the Night Before Christmas."

**Security Mutual Week, 2009**

(*left, inside*). Each year since 1996, Binghamton's mayor has declared the week coinciding with SML's Advanced Marketing Seminar to be Security Mutual Week in recognition of the company's many contributions to the community.

**Christmas Caroling, 2010**

(*left, top*). Continuing a company tradition started in 1994, Security Mutual employees line the twin lobby staircases at lunch on the last workday before Christmas to sing Christmas carols under the direction of SML employee Mike Whitney.







**10<sup>th</sup> Anniversary of Jim “Mudcat” Grant All-Star Golf Tournament, 2011** (above). This tournament was founded in 2001 by Jim “Mudcat” Grant and Security Mutual Life. It benefits four local charities helping area children and their families.

**Empire State Games** (right).

Not only did Security Mutual help sponsor the Empire State Games in 2000 and 2004, but SML Chairman, President and CEO Bruce Boyea served as Chairman of the 2000 Games. Also seen here are some of the hanging flower baskets that have adorned Court Street and Memorial Bridge each summer since 1999, compliments of Security Mutual and the City of Binghamton.

**Jim “Mudcat” Grant All-Star Golf Tournament** (far right).

*Top:* Former Major League Baseball Pitcher, All-Star and Black Aces Member Al Downing takes time to pose with the children at the 2002 All-Star Golf Tournament.

*Center:* Mr. Boyea and “Mudcat” Grant at a special baseball clinic held in 2004 at the B-Mets playing field for children from the Broome County Urban League.

*Bottom: Front row, seated:* Well-loved favorites Alice “Lefty” Hohlmayer McNaughton (All-American Girls Professional Baseball League—AAGPBL), Gina “Chirpie” Casey (Championship Fast Pitch Softball Team), and Lavonne “Pepper” Paire-Davis (AAGPBL) autograph baseballs at the 2007 All-Star Golf Tournament.













**125<sup>th</sup> Anniversary Logo, 2011**  
(above).

**Home Sweet Home Office** (far left, center). The Security Mutual Building has been the home of Binghamton's Peregrine Falcons since 1996.

**Veterans' Tribute, 2011** (far left, bottom). As a gift to the community in honor of the company's 125<sup>th</sup> anniversary, Security Mutual donated the flags and flagpoles for the All Wars Memorial located at the Broome County Veterans Memorial Arena. The flags were dedicated at a special ceremony on July 15.

**YMCA Corporate Challenge, 2011**

Far left, top: Fifty-five SML employees represented the Company at the 2011 competition. A special t-shirt sporting SML's 125<sup>th</sup> anniversary logo on the front and back was designed for participating employees to wear at the event.

*Participants:* Eileen Andrus, Karen Burr, Lorry Casey, Amy Cook, Bill Cook, Deb Cuddy, Kelly Davis, Brenda Doll, Jenni Earle, Adele Dray, John Gal, Steve Gardner, Debra Goldstein, Micky Gorman, Mike Hermann, Tim Kamp, Marsha Kapinus, Colleen Kenny-Kuk, Cathy Kithcart, Joe Kolba, Jane Krebbeks, Vicki Lerner, Michelle Laven, Kathy Lupold, Annette Lyght, Mary Ellen Martin, Karen Mathewson, Becky Maus, Alana Mautone, Kevin McKeown, Cindy McMahon, Donna Melfi, Carrie Millard, Kelly Mohney, Diane Moors, Diane Moschek, Brian Nytech, Scott Parks, Kathy Pot, Sandy Potter, Terry Ray, Tom Robbins, Eric Saar, Tim Schaffer, Linda Sebastianelli, John Seliga, Harry Sherick, Alicia Springett, Monica Stento, Nancy Subik, Sheila Sullivan, Kyle Todack, Rita Todack, Amber VanNess, Mary Ward, Ann Westbrook, Becky Wright.

*Left:* SML Team Captain Kelly Mohney (no. 467), together with Scott Parks (no. 471). Also in the running are SML's Harry Sherick (yellow shirt) and John Seliga (behind Harry).





**The Security Mutual Building at Night, 2011** (*right*). In 2000, Security Mutual began lighting the top of its building to draw attention to downtown Binghamton. The lighting was converted to energy-efficient LED lighting in 2010.

**Celebrating Our 125<sup>th</sup> Anniversary, 2011.**

*Right, inside:* Chairman, President and CEO Bruce Boyea congratulates employees on the United Way Award SML received for the Fall 2010 campaign.

*Far right, top:* The Minute Man interrupts the February 18 employee meeting to read a special 125<sup>th</sup> anniversary proclamation.

*Far right, center:* A second surprise interruption, as an SML-employee flash mob breaks into song and dance about the Company's upcoming 125<sup>th</sup> anniversary.

*Far right, bottom:* As part of the year-long celebration, SML treated employees to a 125<sup>th</sup> Anniversary picnic lunch in the cafeteria on June 24.















**Celebrating Our 125<sup>th</sup> Anniversary with Community Event at July 15 B-Mets Game**

*Far left, top:* SML employees Cathy Stoehr, Eugenia Brady, Sharon VanKuren and Marsha Kapinus (*l to r*) distribute SML birthday cake to game attendees.

*Far left, center:* SML employees Sue Martin, Sue Papastrat and Micky Gorman (*l to r*) give away SML tote bags to the first 1,500 fans through the gates.

*Far left, bottom:* Conducted by local choir director Randy Messing, a 15-member SML chorus opened the game with a performance of "The Star Spangled Banner" in four-part harmony. Pictured (*l to r*): Robin Kellogg, Diane Moors, Erin Davis, Tina Lynady, Ronna Best, Sandy Potter, Colleen Kenny-Kuk, Marsha Kapinus, Dan Davis, Bill Wells, Ken Sosenko, Terry Ray, Dan Foley, John Gal. Not pictured: Kathy Lupold, Dan Powell, Angela Schwartz.

*Left, top:* Ballwinkle greets SML employee Nicole Abdullah and guests.

*Left, bottom:* In addition to presentations by New York State Senator Thomas W. Libous, New York State Assemblywoman Donna A. Lupardo, Broome County Executive Patrick J. Brennan and Binghamton Mayor Matthew T. Ryan, the City of Binghamton presented Security Mutual with a special banner, which was subsequently hung downtown for the rest of the year.



**125 Facelift, 2011** (*left, inside*). In April, the company highlighted its landmark arched window with images representing how its life insurance products have helped clients for 125 years. The company's 107-year-old building also got a "green" facelift with the installation of 300 energy-efficient windows.



## 2011 Advanced Marketing Seminar

*Right, top:* Approximately 175 Field Associates attended Security Mutual's 2011 AMS held November 2-4 in Binghamton.

*Right, bottom:* Security Mutual's Atrium, decorated for the AMS reception at which Field Associates and Home Office employees celebrated the Company's 125<sup>th</sup> anniversary.

*Far right, top:* Marketing's Lisa Canfield shares product information with Field Associates at the 2011 Expo held November 2 at the Holiday Inn Arena.

## A Security Mutual Heirloom Returns Home, 2011 *(right, inside).*

The clock pictured at right was presented to Security Mutual founder and 5<sup>th</sup> president Charles Turner in 1905 by the Company's Field Associates. The clock returned home to Security Mutual this year, and now graces Security Mutual's Board Room.

*Right inside, inset:* Enlargement of the engraved dedication plate contained within the clock.

## SAI and SML Expand Upstate Presence, 2011. *(far right, center).*

In 2011, SAI's Syracuse office moved to new, larger headquarters at 906 Spencer Street and added a Security Mutual Life office, allowing the companies to provide both pension administration services and life insurance products to clients.

**An Historical Visit, 2011 *(far right, bottom).*** On November 4 upon their arrival to work, SML employees were greeted by two eminent personages from Security Mutual's past: Company founder Charles Turner *(left, played by local actor David Rasey)* and Home Office Building architect Truman I. Lacey *(right, played by local actor John Darrow)*, both shown here with SML's 125<sup>th</sup> birthday cake.















**President's Cabinet Logo (above).** Security Mutual's President's Cabinet was formed in 1964, and is the highest honor the Company's Field Associates can achieve. Members of the President's Cabinet exemplify the commitment and spirit of partnership that is the foundation of this 125-year-old Company.

**Members of Security Mutual's 2011 President's Cabinet (left).**

*Row 1 Seated:* Scott Pandillo, Steven Brooks, Larry Holzberg, Charles Holzberg, SML Chairman, President and CEO Bruce Boyea, John Schmitt, Charles Casano, Murray Slimowitz, Jodi Schlesener, Heather Graves

*Row 2 Seated:* Julie Knuff, Laura Mulligan, Rita Perez, David Calleo, Teresa Schunk, Dan Gardella, Charles Stepnowski, Jessica Metz, Lee DeLorenzo, Annette Lorenzo

*Row 3 Standing:* William Romeo, Joseph Volturo, Stanley Sussman, Mark Sessel, Frank Taddeo, Phillip Growick, Gary Clair, Kurt Legler, Ivanhoe Ffriend, Mark Davis, Colin Heafy, Michael Trisci, William Mirabito, Michael Kerper

*Back Row Standing:* Vincent Mezzetti, William Bates, Kevin Johnson, Joseph Herzog, Sean McGinley, David Sussman, John Schmitt, III, Timothy Yurek, James Collins, Lawrence Davis, Alvin Brier, James Wagner, Joshua Barnard, Michael Conway, Nizar Othman, David Kahn, James Tyrpak





**Security Mutual Lobby, 2011.**

Security Mutual's elegant two-story marble lobby is as beautiful today as when it was built in 1904-1905. This shot of the lobby was featured on Security Mutual's 2011 Letter to Policyholders.

**Lobby Murals (inset).** In 1983, then-SML Chairman and CEO Robert M. Best commissioned six local artists to create a series of murals to adorn the recessed archways in the lobby. Each artist's painting depicted a facet of Broome County: medicine, science and technology, education, transportation, performing arts and government.











*Employee Photo - December 25, 1943*

- Row 1: R. Olive Hartt, Mary L. Buckley, Viola S. Austin, Mildred J. Henning, Helen P. Stalford, Katherine C. Creagh, Patience Emerson, Margaret A. Gross, Alice E. Hannon, Juliet S. Ellis, Louise S. Henning, Margaret Hirko, Harriet L. Hyde, Lavinia E. Inman, Olive K. VanPatten, Eleanor Lyons, A. Gretna Walker, Alice F. Morgan, Georgia A. Nelson, Bertha L. Germond, Dorris J. Ramsey, Rowena E. Robinson, Mary Shanley, Mae W. Hammond
- Row 2: Alminta Curry, A. Paul Traub, Marian R. Albright, Jesse F. Hyde, Charlotte R. Bennett, Francis F. Butler, Walter E. Thompson, M. Rena Hopkins, Ellen D. Corser, Abner D. Brown, Harold Gehr, Eleanor J. DeVoe, Dorothy Eastman, Erma R. Powell, Wilda I. Grenell, G. Nelson Watts, Albert E. Smith, Betty Jane Collins, Mabel A. Moore, Charles H. Speary, Doris B. Coy, Marjorie E. Keyes, F. Leon Mable, Juna M. Short
- Row 3: Richard A. Keiser, Geraldine Brown, Retha Waterman, Hope R. Taylor, Frank C. Goodnough, Charles L. Kessler, Fred C. Germond, Dr. Wm. B. Aten, Seymour J. Harrison, Joseph W. Hughes, H. B. Wickes, Howard L. Harris, Fred R. Brunner, Charles D. Barnes, John Gibb, Kenneth W. Fischer, Clyde W. Kaufman, Fred D. Russell, Z. B. Phelps, Mary E. Lounsbery, Anne E. Thompson, Anita M. Nash, Rita P. Brooks
- Row 4: Mildred Freeman, Lee C. Burgess, Charles L. Heywood, Isabel F. Gay, Edward F. Burtis, Patrick J. Conole, Nelson S. Sherman, Anna M. Winkler, David Willaims, Clara L. Brink, Jean M. Decker, Edward A. Hauschild, Willie L. Bennett, Robert M. Hamlin, Robert Kilmer, Iris S. Goodrich, Royal E. Bellis, Romaine F. Thurston, Lester T. Oswald, Edward W. Taylor, Karl M. Hyde, Rose C. Poulter, H. A. Manwaring, Jay L. Gregory, Nellie A. Drasher





Employee Photo - March 31, 2011



Row 1: Marie Capps, Brian Daniel, Virgil Chastine, Monica Stento, Consiglia Farzad, Adele Dray, Carol Seidel, Sandy Potter, Rebecca Wright, Angela Schwartz, Diane Moschek, Jean Terboss, Gloria Heffner, Janet Spatol, Melissa Glasgow, Michele Gillespie, Diane Pello, Candice Faith, Eric Saar, Bruce Boyea, Howell Palmer, John Gal, Rick Wortman, Dave Mistretta, Cheryl Coolbaugh, Bart Bozzi, Scott Sylvester, Michael Leska, Sue Mistretta, Sandra Livingston, Sheryl Evans, Deborah Ivan, Mary Danelli, Yvonne Frey, Ronna Best, April Hoover, Kaitlyn Lynady, Linda Drake, Linda Wells, Karen Kliment, Aixa Best, Colleen Kenny-Kuk

Row 2: Paulette Mancini, Alice Mower, Jill Patak, Karen Mathewson, Brenda Doll, Roger Botting, Dorethea Wright-Mullen, Jakki Truex, Deborah Wade, Kim Wheaton, Lorri Griffiths, Emily Hammond, Joe Sperduti, Kathy Marinaro, Cathy Kithcart, Nancy Subik, Sue Warner, Kellie Gehres, Rebecca Maus, Christine Cianfriglia, Teri Valenia, Mary Ellen Martin, Maria Palmatier, Debbie Czebiniak, Sue Zick, Ken Lee, Julia Karsko, Nanette Pellerin, Vicki Larnerd, Tina Lynady, Linda Taylor, Cindy Machovec, Deborah Schafer, Deanne Ely, Donna Melfi, Amber Van Ness, Alicia Springett, Kelly Neferis, Kelly Mohney, Olive Bernhardt, Kim Conlon, Rachael Stoddard, Joanne Rauscher, Ann Westbrook, Caitlin Costello, Eileen Andrus, Patti Peaslee, Sue Papastrat, Janet Vanek, Sharon Van Kuren, Olga Grechka, Darlene Wintersteen, Rosita Cora, Virginia Cron

Row 3: Jim Fox, Karen Burr, Melissa Ross, Trudy Washington, Oliver Hicks, Heidi Hicks, Ashley Purvis, Kelly Davis, Jeanne Pierson, Theresa Paterniti, Lisa Puzo, Lisa Canfield, Cindy McMahon, Susan Moss, Lisa Ferranti, Kandice Penna, Eugenia Brady, Patti Sbarra, Sherri Beardesley, Carmen Jones, Lori Burnside, Dawn Gilbert, Kim Sinnett, Ivette Osorio, Robin Hahn, Michelle Miller, Robin Kellogg, Kathy Lupold, Christina Cramer, Naomi Cramer, Cynthia Downin, Heather Zebrowski, Linda Sebastianelli, Mindy Bufford, Jennifer Bebla, Heather Varney, Deborah Race, Betsy Kocik, Laura Ealy, Nancy White, Rebecca Mann, Rita Todack, Marta Presto, Terry Hill, Annette Chapolo, Linda Heier, Lynette Brooks, Peggy O'Hara, Jaime Eitel-Rezucha, Leia Kendrick, Brandon Cardone, Mike Bell

Row 4: Eugene Clark, Cheryl Olmstead, April Wiggins, Cynthia Alderman, Laura Hunsinger, Bette Brown, Laurie Gili, Rick Zweig, Lloyd Campbell, Tim Kamp, Donald Smith, Leland Waite, Renee Dervay, Chris Seager, Mike Warren, Dan Powell, Michael Phillips, Tim Schaffer, John Loposky, Michael Hermann, John Seliga, Michael Kovac, Joe Kolba, Ronald Funk, Jim Mellema, Armando Testani, Bill Kuk, Phil Courtright, Sean O'Neill, Kevin McKeown, Bryan Mallery, Debra Goldstein, Tim Davis, David Tokos, Diane Moors, Bob Kennedy, Terry Ray, Mark Melville, Harry Sherick, Eric Best, George Kozol, John Hendrickson, Dan Foley, Gene Slawta

Row 5: Barbara Knapp, Maryrose Shaw, Rick Shaw, Amy Cook, Cheryl Lyon, Angela Furey, Bonnie Bidwell, Margaret Semmler, Tracey Leslie, Karrie Birt, Saran Rivera, Catherine Richard, Karen Seaman, Bill Cook, Diane Dellapenna, Debbie Cuddy, Wendy Mack, Jane Krebbeks, Sheila Sullivan, Michelle Mineno, Laurie Kocak, Cathy Stoehr, Chris Walsh, Regina Lis, Linda Fiacco, Jim Lynch, Sandy Pendorf, Melanie Rees, Dottie Curtyo, Pam Falank, Penny Smith, Judy Haynes, Laurie Malchak, Nancy Nicklaw, Joanne Herrick, Scott Parks, Jenni Earle, Esther Casey, Kyle Todack, Michael Mosher, Michael Whitney, Alicia Crispell

Row 6: Terri Lord, Stan Lord, Mary Ward, Donna Pandich, Paul Mariboe, Tom Moss, Chris Dulny, Dolly Fox, Samantha Cowell, Kati Cline, Erin Davis, Delores Button, Nicole Oakley, Therese Jacoski, Cathy Gardner, Lorry Casey, JoAnne Lescault, Chris Bufford, Tom Robbins, Annette Lyght, Dane Mitchell, Judy Andel, Joann Guccia, Cindy Gilbert, Bill Wells, Dan Wessell, Colleen Lewis, Barb Parker, Alain Castonguay, Michelle Laven, Carrie Millard, Chris Cusano, Marsha Kapinus, Justin Salisbury, Brian Clifford, Gary Mailen, Kathy Conroy, Julie Huggler, Vincent Montelione, Allan Whieldon, Hugo Gonzalez, Terence Bookhout, Dale Dean, Joe Sullivan, Suzanne Martin, Ken Sosenko, Eileen Shelp-Olmstead, Carl Diers, Jim Conlon



# Celebrating 125 Years

 SECURITY  
MUTUAL  
LIFE | 125  
YEARS

*Delivering on Our Promises Since 1886*



SECURITY MUTUAL LIFE INSURANCE COMPANY OF NEW YORK

80 Exchange Street, Binghamton, NY 13902