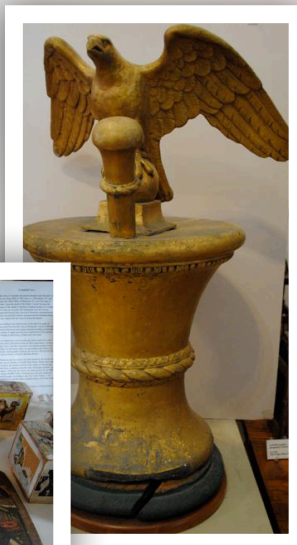
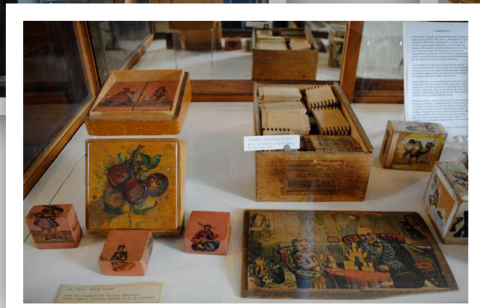
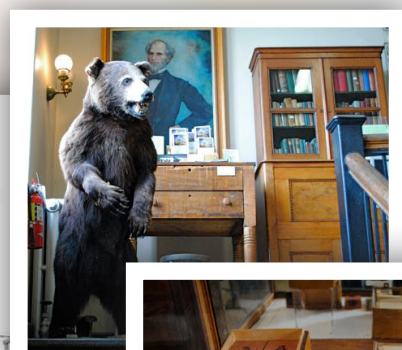


Onward and Upward

Our immediate goal is to build a new library that will house and facilitate our current programs. This library will serve as a community center, where people can meet, learn, research, share, and socialize. The new library will also provide space for our Outreach Services Department, which serves county school districts, day cares, senior centers, deposit stations, and the county correctional facility.



The building we currently occupy will remain and be converted into a museum dedicated to our county's historical treasures and stories. With adequate space, it will become a destination, not only for those interested in Susquehanna County history, but for family researchers from around the country.



Envision the Future with Us

History, education, involvement—we're continuing a legacy, and we'd like you to be a part of it by making a pledge to our building campaign.

The SCHS&FLA is a 501(c)3 organization. Your donation is fully tax-deductible.

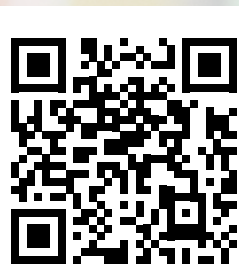
For more details about naming opportunities or to talk with someone about supporting our exciting campaign call 570 278-1881.

Mail Donations To:

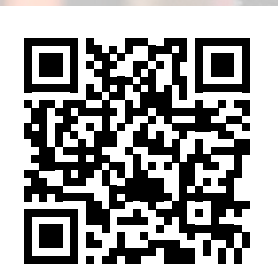
Susquehanna County Historical Society And Free Library Association

18 Monument Street

Montrose, PA 18801-1477



[facebook.com/susqcolibrary](https://www.facebook.com/susqcolibrary)



librarybuildingfund.org

MAKE IT HAPPEN NOW!

Support the Susquehanna County Historical Society & Free Library Association in envisioning our community's future.



Who We Are

Over 100 years ago, the Susquehanna Historical Society & Free Library Association opened its doors on Monument Square. Today our historic building's doors are still open to county residents along with three additional locations. Each day, the library system lends out over 700 items on average, with over 93,000 items for patrons to borrow.

730

Average number of items borrowed per day

40%

Percentage of county residents with library cards

42,000

County-wide population served by library

What We Stand For

As the media world becomes increasingly digital, libraries are at a turning point where they must adapt to a changing culture while maintaining their valuable systems and presence. We're striving to become a center for education where reading is celebrated and applied to our community's current and future endeavors.

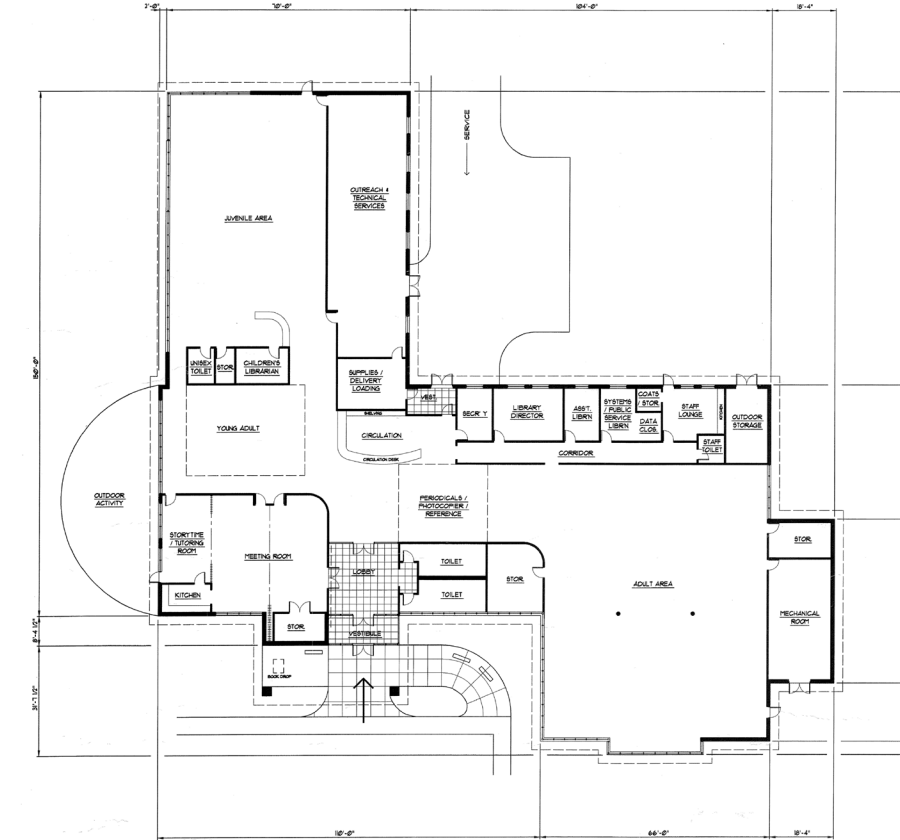
We have been in our current location for over 100 years, and we have outgrown our space! With a new facility, we'll have more freedom to adapt our programming to better adjust to the needs of a modern community—and you'll find the resources you need for meeting spaces, studying, or individual learning.

Our Goal

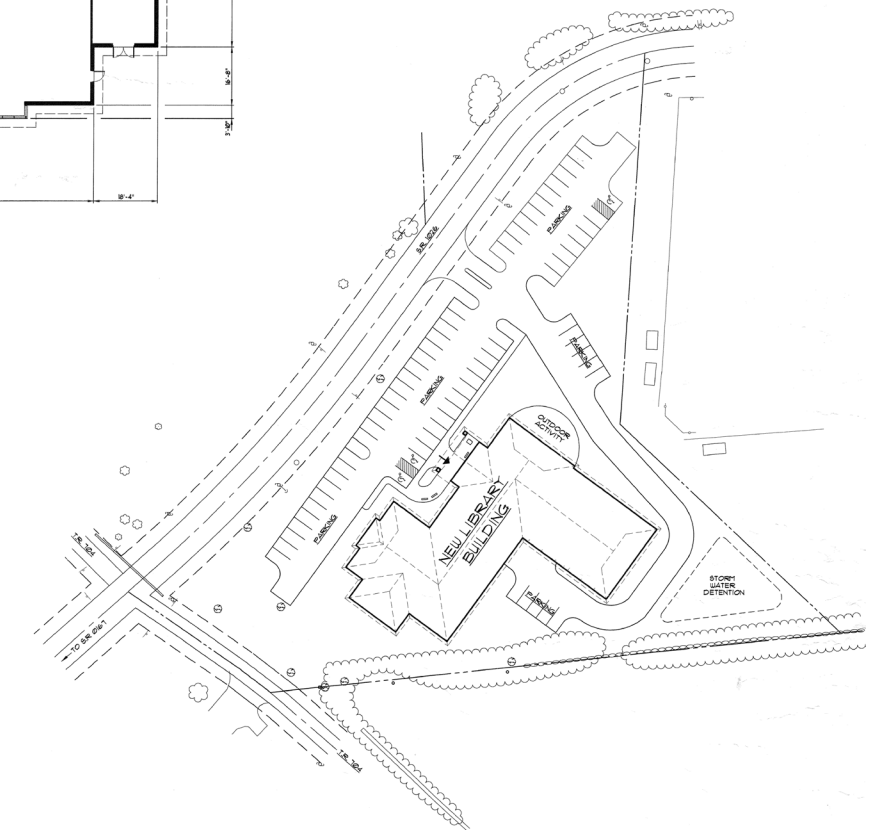
Our mission is to provide a modern, spacious, community-based library that facilitates information sharing and learning through technology and books, in whatever combination the future holds.

6,250

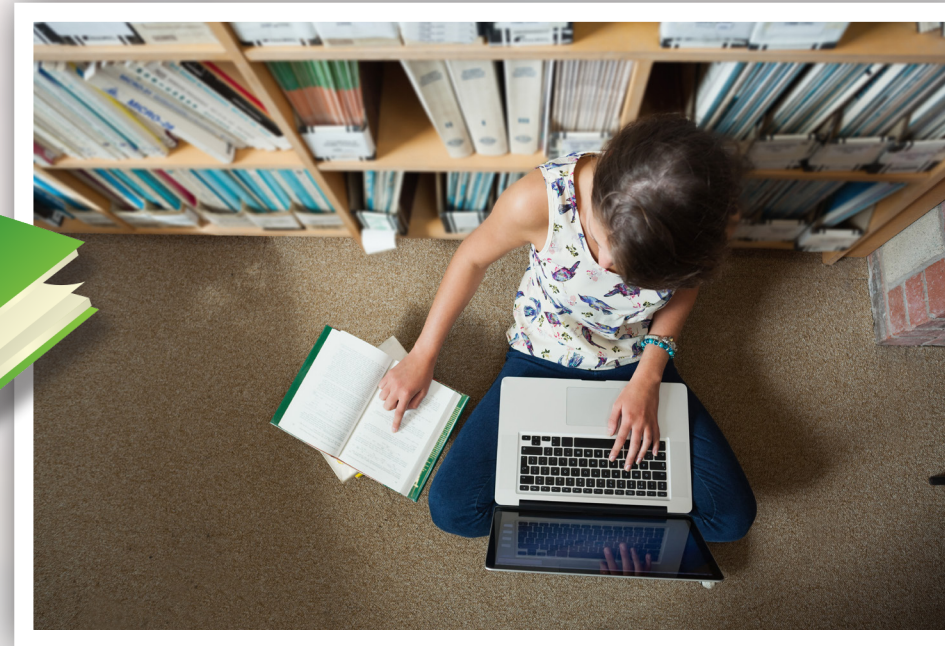
Number of square feet occupied in current building



SCHEMATIC FLOOR PLAN
SCALE: 1/8" = 1'-0"



SCHEMATIC SITE PLAN
SCALE: 1" = 100'
• GROSS BUILDING AREA - 21,710 SQUARE FEET
• 110 PARKING STALLS



20,000

Number of square feet projected for new library location

